



ALLEGHENY COUNTY AIRPORT AUTHORITY

PITTSBURGH INTERNATIONAL AIRPORT
ALLEGHENY COUNTY AIRPORT

Wildlife Hazard Management - Working
with Off- Airport Community Partners

Agenda

1. **Welcome and Introduction**
2. **Pittsburgh International Airport Overview**
3. **What Can Be Done**
4. **Key Take Away**



Introduction

- **Airport/aerodrome operators have the responsibility of maintaining an airfield free of recognized hazards, including wildlife.**
- **We own/lease the property. We take actions to ensure safety of aircraft.**



Introduction

How Do We Reduce Wildlife

- **Fencing**
- **Vegetation management**
- **Wildlife management**



Introduction

The Off- Airport Community Partners

- **What can we do about our neighbors and property owners near the airport/aerodrome?**
 - **Talk/Educate**
 - **Think**
 - **Act**
 - **Partner**



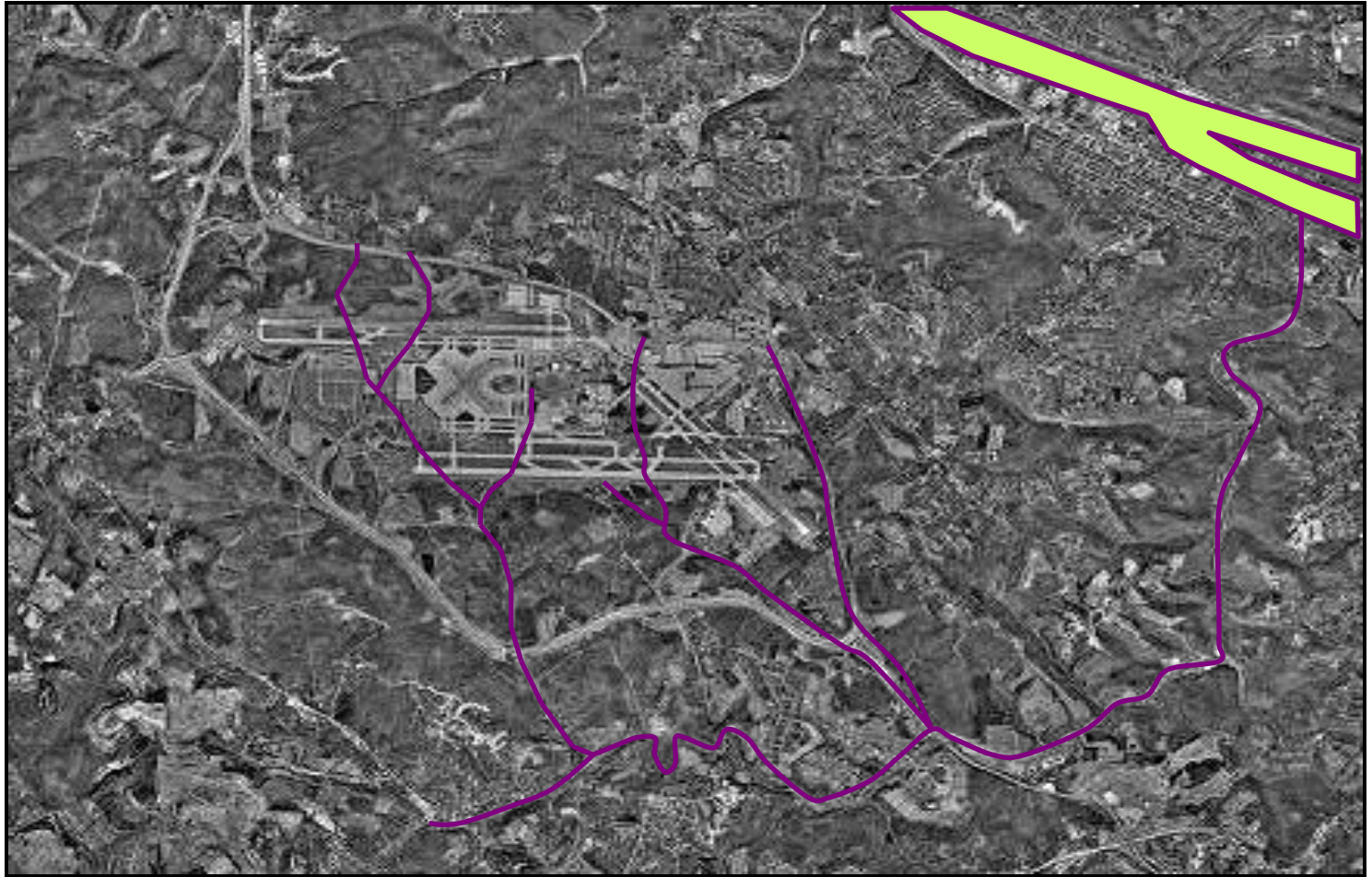
Pittsburgh International Airport – Overview

- **3,561 hectares - 8,800 acres of property**
- **Located in Two Municipalities**
 - **Findlay Township – rural with agriculture**
 - **Moon Township – suburban with commercial development**





Geographic Setting



Working with Off-Airport Community Partners- Things PIT Has Done

- **BUILDING CO-OPERATORS**
 - Meet and Educate
 - Townships (Moon and Findlay)
 - Developers
 - Landowners/Farmers
 - Reservoir Operators
 - Regulators



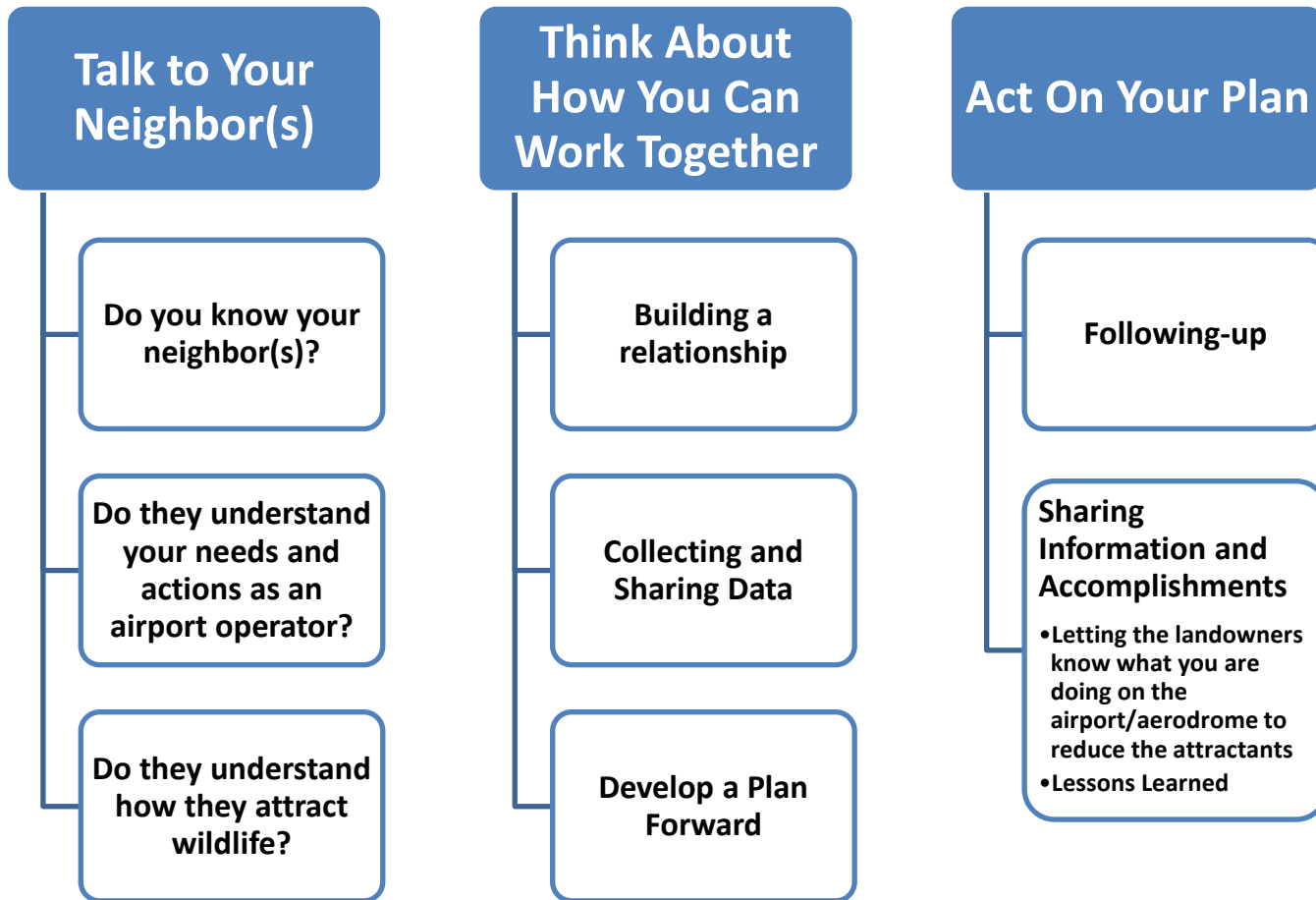
Working with Off-Airport Community Partners

Why Would You Do It?

- **Community actions can affect wildlife activities:**
 - **Land Disturbance = Habitat Change, Nesting, Movement**
 - **Ponding of Stormwater = Potential Wildlife Attractant**
 - **Farming Activities = Food Source**
 - **Planting of Grass, Shrubs, Trees = Food or Shelter**



Working with Off-Airport Community Partners- Things You Can Do



Working with Off-Airport Community Partners - Key Take Aways

- ***Know Your Neighbor***
- ***Build Trust***
- ***Meet Regularly***
- ***Share Information***
- ***Work Together***



Thank You!

**Pittsburgh International Airport
Allegheny County Airport Authority**

Landside Terminal, 4th Floor Mezz.

P.O. Box 12370

Pittsburgh PA 15231-0370

www.flypittsburgh.com

Benjamin A. Shertzer

Wildlife Administrator

(412) 472-3843 (office)

bshertzer@flypittsburgh.com

